



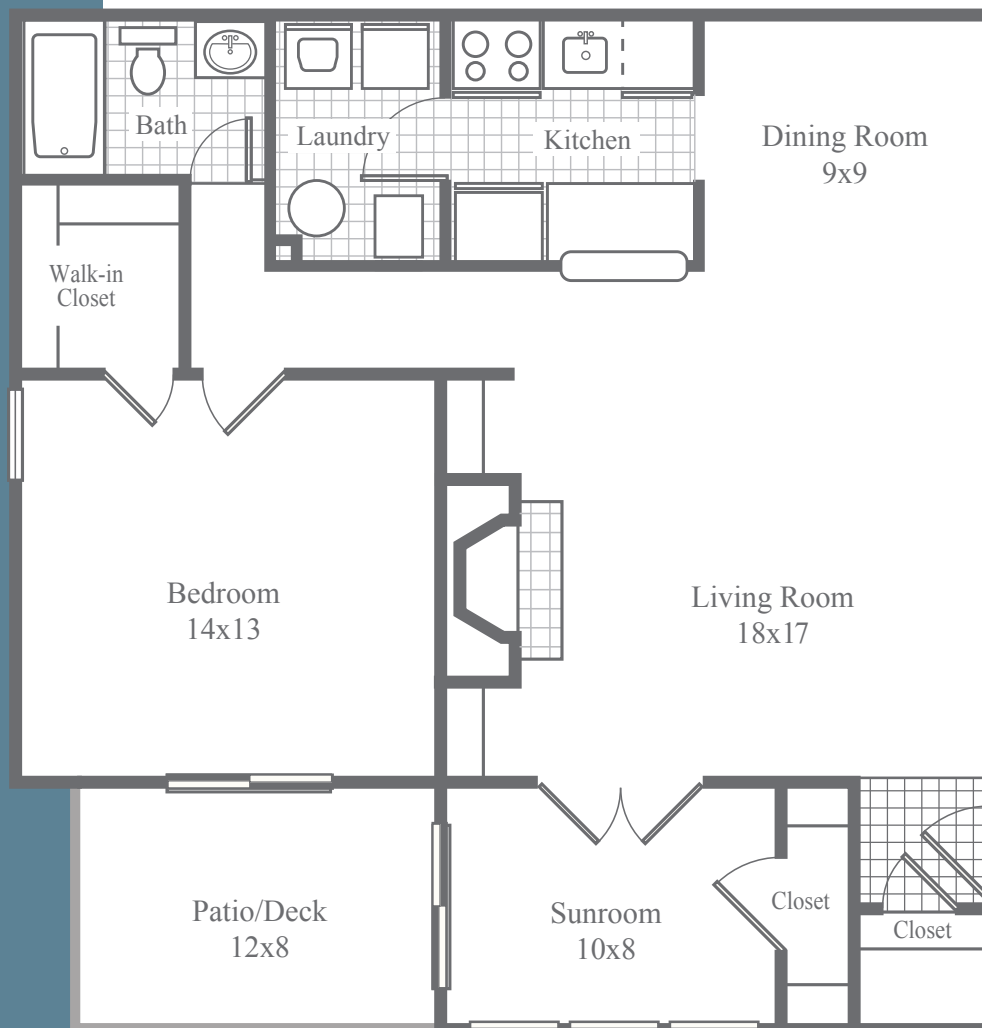
CALIBRE LAKE

LUXURY URBAN STYLE
APARTMENT HOMES

The Fillmore

1 Bedroom • 1 Bath • Sunroom • 1040 SF

- Stately fireplace mantel framed by built-in bookshelves
- Wood-burning fireplace with convenient gas starter
- Elegant crown molding
- High-speed cable and electrical outlets above fireplace mantel for optional wall mounted flat-panel TV
- Classic French doors lead from living area to four-seasons sunroom
- Dining area with directional track lighting on dimmer
- Stainless steel appliances in select units
- Laundry room accommodates full-size washer/dryer
- Spacious walk-in closet in bedroom and bonus storage closet in sunroom
- LED lighting for ambiance and energy efficiency



**Dimensions are approximate*

100 Calibre Lake Parkway S.E. • Smyrna, GA 30082
Phone 770.438.9300 • Fax 770.438.9789 • Email info@calibrelake.com
CalibreLake.com